

Electrically conductive polyurethane hose, medium-heavy

Applications

- flexible hose/ ducting for abrasive powder, bulk material, granulate and for gases
- industrial vacuum cleaners, vacuum cleaners
- explosion hazard area
- Coal mine, mine, tunneling: ventilation, methane extraction

Properties

- highly abrasion resistant
- good resistance to oil, gasoline and chemicals
- very good low temperature flexibility
- electrically conductive wall: electrical and surface resistance <math><10^9</math>

- in accordance with ATEX 2014/34/EU and German TRGS 727: pneumatic transport of flammable dusts and bulk materials (Zone 20, 21, 22 inside), aspiration of combustible dusts (Zone 22 inside), for conveying for flammable liquids (inside zone 0, 1, 2), for conveying for non-flammable liquids, for use in zone 1 and 2 (gases), for use in zone 0 (gases)
- according to DIN 26057 Type 2
- conforms to RoHS guideline

Temperature Range

- 40°C to 90°C

Design, Material

AIRDUC® profile hose

- spring steel wire firmly embedded in wall
- wall: electrically conductive premium ester-polyurethane (Pre-PUR®)
- wall thickness 0,7 mm approx.

Delivery variants

- further diameters and lengths available on request
- black (standard)
- customer-specific product marking

I.D. in / mm	O.D. mm	Over- pressure bar	Under- pressure bar	Bending Radius mm	Weight kg/m	Dimensions in Stock m	Further Production Lengths m	Order No.
1 / 25	32	2,285	0,460	23	0,200	10	-	351-0025-1003
- / 30	38	1,920	0,440	26	0,260	10	-	351-0030-1003
1,25 / 32	40	1,800	0,430	27	0,280	10	-	351-0032-1003
1,36 / 35	43	1,650	0,410	29	0,300	-	10	351-0035-1003
1,5 / 38	46	1,525	0,400	31	0,320	10	-	351-0038-1003
- / 40	48	1,455	0,390	32	0,340	10	-	351-0040-1003
1,75 / 44-45	53	1,295	0,360	35	0,380	-	10	351-0045-1003
2 / 50-51	58	1,165	0,340	38	0,410	10	-	351-0050-1003
- / 55	63	1,065	0,305	41	0,450	-	10	351-0055-1003
2,36 / 60	68	0,980	0,265	44	0,490	10	-	351-0060-1003
2,5 / 63-65	73	0,900	0,235	47	0,530	10	-	351-0065-1003
- / 70	79	0,840	0,195	50	0,570	10	-	351-0070-1003
3 / 75-76	84	0,780	0,180	53	0,610	10	-	351-0075-1003
- / 80	89	0,730	0,165	56	0,650	10	-	351-0080-1003
3,5 / 89-90	99	0,655	0,145	62	0,730	10	-	351-0090-1003
4 / 100-102	109	0,585	0,115	68	0,790	10	-	351-0100-1003
- / 110	119	0,535	0,100	74	0,870	10	-	351-0110-1003
4,5 / 114-115	124	0,515	0,095	77	0,910	-	10	351-0115-1003
4,72 / 120	129	0,495	0,085	80	0,940	-	10	351-0120-1003
5 / 125-127	134	0,475	0,075	83	0,980	10	-	351-0125-1003
- / 130	139	0,455	0,075	86	1,030	-	10	351-0130-1003
5,5 / 140	149	0,420	0,075	92	1,090	-	10	351-0140-1003
6 / 150-152	159	0,390	0,070	98	1,330	10	-	351-0150-1003
6,3 / 160	169	0,370	0,060	104	1,410	-	10	351-0160-1003
6,5 / 165	174	0,360	0,060	106	1,455	-	10	351-0165-1003
- / 170	179	0,350	0,060	108	1,500	-	10	351-0170-1003
- / 175	184	0,340	0,050	113	1,550	-	10	351-0175-1003

Overpressure and underpressure are recommended threshold operating values, products can be subjected to higher loads upon request. The bending radius is measured through the inside of the hose arch. Additional technical data at www.norres.com. The right to make technical modifications is reserved. All values determined at 20°C and are approx. data.



I.D. in / mm	O.D. mm	Over- pressure bar	Under- pressure bar	Bending Radius mm	Weight kg/m	Dimensions in Stock m	Further Production Lengths m	Order No.
7 / 178-180	189	0,330	0,050	116	1,590	10	-	351-0180-1003
8 / 200-203	209	0,300	0,050	128	1,760	10	-	351-0200-1003
- / 225	234	0,265	0,035	143	2,200	-	10	351-0225-1003
9 / 228-229	237	0,260	0,035	148	2,230	-	10	351-0228-1003
- / 250	259	0,240	0,020	158	2,430	10	-	351-0250-1003
10 / 254	263	0,235	0,020	160	2,460	-	10	351-0254-1003
- / 275	284	0,215	0,020	173	2,630	-	10	351-0275-1003
11 / 280	289	0,215	0,020	176	2,670	-	10	351-0280-1003
- / 300	309	0,195	0,015	188	2,860	-	10	351-0300-1003
12 / 305	314	0,190	0,015	191	2,905	-	10	351-0305-1003
- / 315	324	0,185	0,015	197	3,000	-	10	351-0315-1003
- / 325	334	0,185	0,015	203	3,100	-	10	351-0325-1003
13 / 330	339	0,180	0,015	206	3,145	-	10	351-0330-1003
- / 350	359	0,170	0,015	218	3,330	-	10	351-0350-1003
14 / 356	365	0,165	0,015	222	3,445	-	10	351-0356-1003
- / 400	409	0,145	0,010	248	4,270	-	10	351-0400-1003
16 / 405-406	415	0,145	0,010	253	4,335	-	10	351-0406-1003
- / 450	459	0,130	0,010	281	4,800	-	10	351-0450-1003
18 / 457	466	0,130	0,010	286	4,875	-	10	351-0457-1003
- / 500	509	0,120	0,010	313	5,330	-	10	351-0500-1003
20 / 508	517	0,120	0,010	318	5,415	-	10	351-0508-1003

Accessories



CLAMP 212



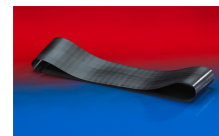
CLAMP 212 EC



CLAMP 217



CLAMP 213



CONNECT 228



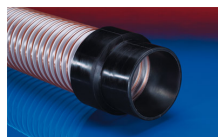
CONNECT MOULD ASSEMBLY 233



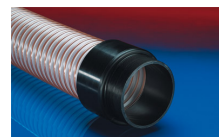
CONNECT THREAD FITTING 234



CONNECT 240 + 241



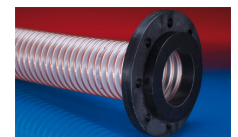
CONNECT 240 EC



CONNECT 242



CONNECT 243



CONNECT 244



CONNECT 245



CONNECT 246



CONNECT 223



CONNECT 270-271

Overpressure and underpressure are recommended threshold operating values, products can be subjected to higher loads upon request. The bending radius is measured through the inside of the hose arch. Additional technical data at www.norres.com. The right to make technical modifications is reserved. All values determined at 20°C and are approx. data.